



KF3336-90

Fridge / Freezer

User Guide





### **WARNING!**

In order to ensure a normal operation of your fridge/freezing appliance, which uses a completely environmentally friendly refrigerant the R600a (Flammable only under certain conditions) you must observe the following rules:

- Do not hinder the free circulation of the air around the appliance.
- Do not use mechanical devices in order to accelerate the defrosting, other than the ones recommended by the manufacturer.
- Do not destroy the refrigerating circuit.
- Do not use electric appliances inside the food keeping compartment, other than those that might have been recommended by the manufacturer.

### **ADVARSEL!**

For at sikre en normal funktion af køle-/fryseskabet, der anvender et komplet miljøvenligt kølemiddel, R 600a (Kun brændbar under særlige forhold), skal du overholde følgende regler:

- Undlad at hindre den frie luftcirkulation rundt om apparatet.
- Der må ikke anvendes mekanisk udstyr, ud over det af producenten anbefalede, til at fremskynde afrimningsprocessen.
- Undgå at beskadige kølekredsløbet.
- Undlad at bruge elektrisk udstyr inde i rummet, hvor der opbevares mad, ud over de steder, som producenten evt. har anbefalet.

### **VARNING!**

För att säkerställa normal användning av kyl/frysaskåpet, som utnyttjar helt miljöanpassade kylmedlet R600a (Endast antändbart under vissa förhållanden) måste du iaktta följande regler:

- Hindra inte fri luftcirkulation runt kyl/frysaskåpet.
- Använd inga mekaniska enheter för att påskynda avfrostningen, förutom det som rekommenderas av tillverkaren.
- Skada inte kylningskretsen.
- Använd inga elektriska enheter inuti matsignalsfacket, utöver det som rekommenderas av tillverkaren.

### **ADVARSEL!**

For å sikre normal drift av kombiskap, som bruker en fullstendig miljøvennlig kjølevæske – R600a (Kun antennelig under bestemte forhold), må du overholde følgende regler:

- Ikke blokker den frie luftsirkulasjonen rundt apparatet.
- Ikke bruk mekanisk utstyr for å akselerere avisingsprosessen annet enn slikt utstyr som produsenten anbefaler.
- Pass på så du ikke ødelegger kjølekretsen.
- Ikke bruk elektriske apparater inne i de delene av skapet der du lagrer mat, såfremt de ikke er av en slik type som produsenten anbefaler.

### **VAROITUS!**

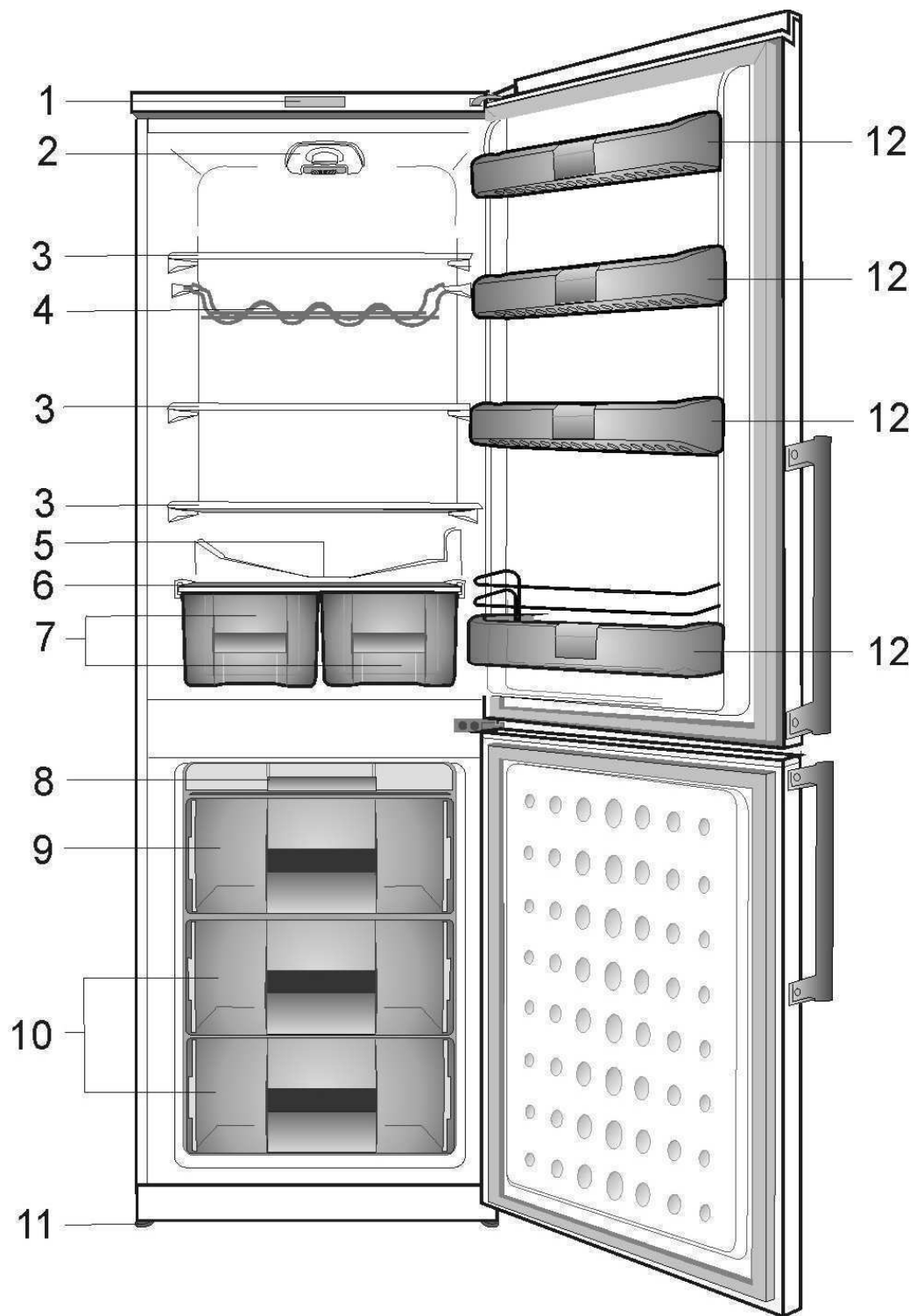
Laitteen kylmäaineena on ympäristöystävällinen R600a (syttyvää vain tietyissä olosuhteissa). Jotta laite toimisi normaalisti, on noudatettava seuraavia ohjeita:

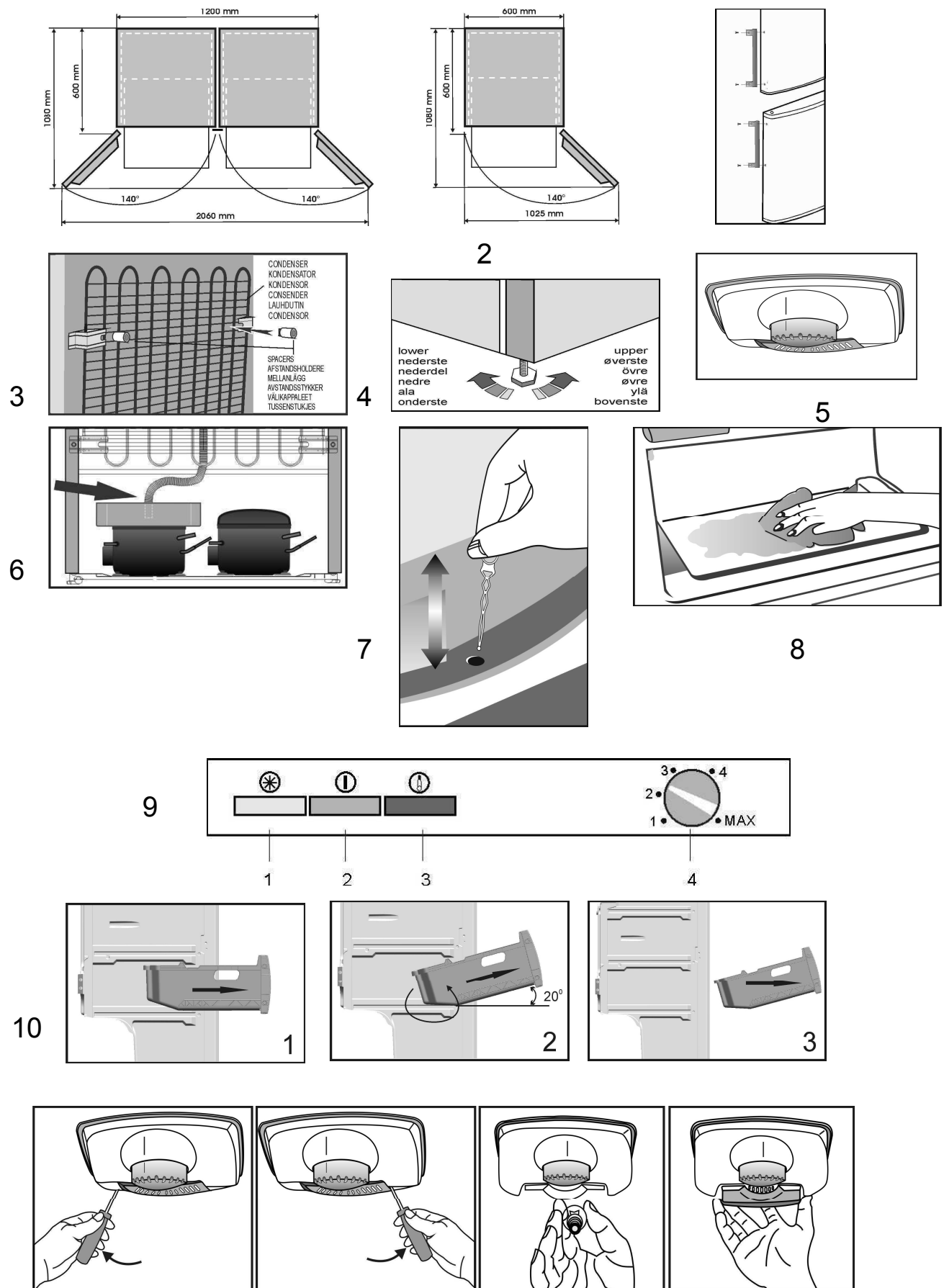
- Älä estä ilman vapaata kiertoa laitteen ympäri.
- Älä käytä mekaanisia välineitä sulatuksen nopeuttamiseen, paitsi sellaisia, joita valmistaja suosittelee.
- Älä vahingoita jäähdytyspiiriä.
- Älä käytä ruokalokeroiden sisällä sähkölaitteita, jollei valmistaja niin suosittele.

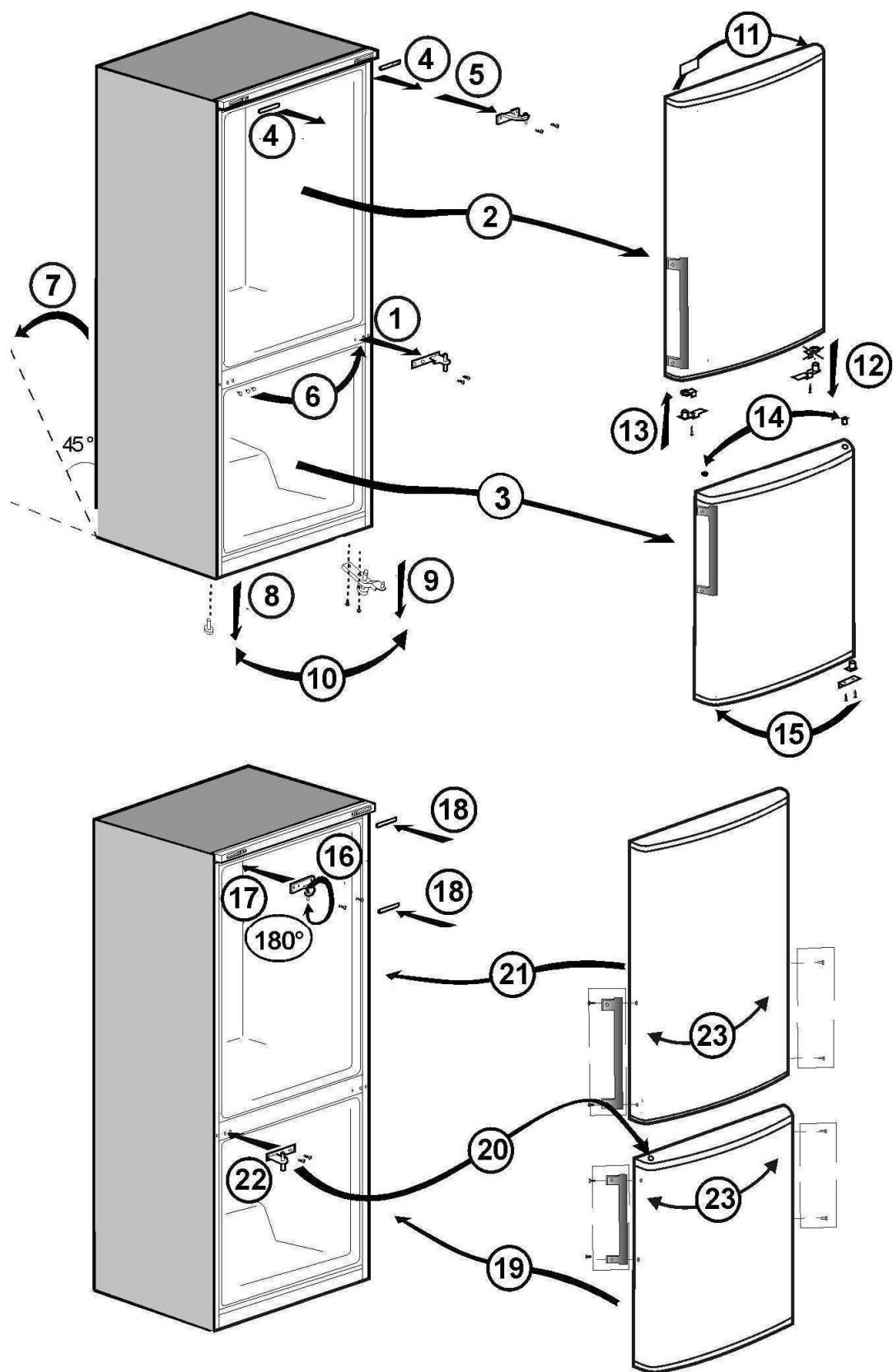
### **WAARSCHUWING!**

U dient de volgende regels in acht te nemen om de normale werking van uw diepvriesapparaat, die de volledig milieuvriendelijke koelvloeistof R600a gebruikt, te verzekeren:

- De vrije luchtcirculatie rond het toestel niet belemmeren.
- Geen andere mechanische toestellen gebruiken om het ontdooien te versnellen dan de toestellen die door de fabrikant worden aangeraden.
- Het koelcircuit niet kapot maken.
- Geen andere elektrische toestellen in de bewaarlade voor etenswaren gebruiken dan de toestellen die eventueel door de fabrikant worden aangeraden.







Congratulations on your new GRAM fridge/freezer.

### ***Safety first!***

Do not connect your appliance to the electricity supply until all packing and transit protectors have been removed.

- Leave to stand for at least 4 hours before switching on to allow the compressor oil to settle if transported horizontally.
- If you are discarding an old appliance with a lock or a latch fitted to the door, ensure that it is left in a safe condition to prevent the entrapment of children.
- This appliance must only be used for its intended purpose.
- Do not dispose of the appliance on a fire. Your appliance contains non CFC substances in the insulation which are flammable. We suggest that you contact your local authority for information on disposal and available facilities.
- We do not recommend the use of this appliance in an unheated, cold room (e.g. garage, conservatory, annex, shed, out-house etc.).

To obtain the best possible performance and problem-free operation from your appliance it is very important to read the user guide carefully. Failure to observe the user guide may reduce your right to free service during the guarantee period.

Please keep the user guide in a safe place for easy reference.

**This appliance is not intended for people with reduced physical, sensory or mental capabilities or lack of experience and knowledge unless they have been supervised or instructed in the use of the appliance by a person responsible for their safety.**

**Children should be supervised to ensure that they do not play with the appliance.**

## Electrical requirements

Before inserting the plug into the socket make sure that the voltage and the frequency shown in the rating plate inside the appliance corresponds to your electricity supply.

We recommend that this appliance is connected to the mains supply via a suitably switched and fused socket in a readily accessible position.

The plug has to be accessible after installation in order to allow disconnection of the appliance from the supply.

### **Warning! This appliance must be earthed.**

Repairs to the electrical equipment may only be made by authorised technicians. If the power cable is damaged, the manufacturer or GRAM service must replace it in order to avoid danger.

### **ATTENTION!**

This appliance operates with R600a which is an environmental friendly but flammable gas. During the transportation and fixing of the product, care must be taken not to damage the cooling system. If the cooling system is damaged and there is a gas leakage from the system, keep the product away from open flame sources and ventilate the room for a while.

**WARNING** - Do not use electrical devices or other means to accelerate the defrosting process, other than those recommended by the manufacturer.

**WARNING** - Do not damage the refrigerant circuit.

## Transportation instructions

1. The appliance should only be transported in an upright position. The packaging must be intact during transportation.

2. If the appliance has been positioned horizontally during transportation, it must not be operated for at least 12 hours to allow the system to settle.

3. Failure to comply with the above instructions could result in damage to the appliance for which the manufacturer will not be held liable.

4. The appliance must be protected against rain, moisture and other atmospheric influences.

### **Important!**

- Avoid touching the bottom of the condenser metal wires at the back of the appliance while cleaning or carrying the appliance as you may receive injuries to your fingers and hands.

- Do not attempt to sit or stand on top of your appliance as it is not designed for such use. You could be injured or damage the appliance.

- Make sure that the mains cable is not caught under the appliance during and after moving it as this could damage the cable.

- Do not allow children to play with the appliance or tamper with the controls.

## Installation instructions

1. Do not keep your appliance in a room where the temperature is likely to fall below +10°C (50°F).

2. Do not place the appliance near cookers or radiators or in direct sunlight, as this will cause extra strain on the appliance's functions. If installed next to a heat source or freezer, maintain the following minimum side clearances:

30 mm from cookers

300 mm from radiators

3. Make sure that sufficient room is provided around the appliance to ensure free air circulation (**Fig. 2**).

- Place the spacer on the back of your appliance to set the distance between the appliance and the wall (**Fig. 3**).

4. The appliance should be positioned on a level surface. The two front legs can be adjusted as required. To ensure that your appliance is standing upright adjust the two front legs by turning them either clockwise or anti-clockwise, until firm contact is secured with the floor. Correct adjustment of the legs prevents excessive vibration and noise (**Fig. 4**).

5. Refer to the "Cleaning and Care" section to prepare your appliance for use.

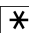


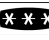
6. If you want to place two products side by side, e.g. a refrigerator and a freezer, as a side by side solution you have to use a decoration kit which contains a small mat and a decoration part. The mat is mounted on the side of one of the products to create a space between the products. The decoration part is placed between the products to hide the gap between the products (**Fig 2**). The decoration kit is not a part of the product but can be delivered as an accessory.

### **Getting to know your appliance** (Fig. 1)

- 1 - Control panel, display and adjustment
- 2 - Thermostat control and interior light
- 3 - Removable glass shelf
- 4 - Wine bottles support
- 5 - Water collector
- 6 - Glass shelf
- 7 - Vegetable drawer
- 8 - Ice cube tray support & ice cube tray
- 9 - Compartment for fast freezing
- 10 - Compartments for keeping frozen food
- 11 - Adjustable front legs
- 12 - Door shelves

### **Suggested arrangement of the food in the appliance**

Guidelines for obtaining optimum storage:

1. The fridge compartment is for the short-term storage of fresh food and drinks.
2. The freezer compartment is   rated and suitable for the freezing and storage of pre-frozen food. The recommendation for   storage as stated on the food packaging should be observed at all times.
3. Cooked dishes should be stored in airtight containers.
4. Fresh wrapped produce can be kept on the shelves. Fresh fruit and vegetables should be stored in the vegetable drawers.
5. Bottles can be kept in the door shelves or on the bottle shelf.
6. To store fresh meat, wrap it in polythene bags and place it in the coldest place in the fridge compartment. Don't let meat juice from fresh meat come into contact with other types

of food. For safety, only store fresh meat for two to three days.

7. For maximum efficiency, the removable shelves should not be covered with paper or other materials to allow free circulation of cool air.

8. Do not keep vegetable oil on the door shelves. Keep the food packed, wrapped or covered. Leftover canned food should not be stored in the can.

9. To take out the drawers from the freezer compartment please proceed as in **Fig. 10**.

### **Temperature control and adjustment**

#### **A) Fridge compartment**

Operating temperatures are controlled by the thermostat control (**Fig. 5**) and may be set at any position between 1 and 5 (the coldest position).

The average temperature inside the fridge should be around +5°C (+41°F).

Therefore adjust the thermostat control to obtain the desired temperature. Some sections of the fridge may be cooler or warmer (such as the vegetable drawer and the top part of the cabinet) which is quite normal.

We recommend that you check the temperature with an accurate thermometer to ensure that the storage compartments are kept to the desired temperature.

Remember to read off the thermometer very quickly as the temperature on the thermometer will rise very rapidly after you remove it from the freezer. Please remember that each time the door is opened cold air escapes and the internal temperature rises. Therefore never leave the door open and ensure that it is closed immediately after food is put in or removed.

#### **B) Freezer compartment**

The control panel (**Fig. 9**) adjusts the temperature in the freezer and has the following functions:

##### **1 - Orange LED indicator (1) - Fast freeze on**

When you turn the thermostat control (4) to the MAX position, the orange LED indicator is switched on and the compressor will run continuously. Remember to turn the thermostat control back to its previous position once the food is frozen.



**2 - Green LED indicator (2) - electricity on (Voltage)**

Is switched on when the appliance is connected to the socket and remains switched on as long as the power is switched on. This green LED indicator does not provide information on the temperature inside the freezer.

**3 - Red LED indicator (3) - High Temperature Alarm****4 - Setting the thermostat control****High temperature alarm**

After turning on the appliance for the first time the alarm is not active for 12 hours (The red LED indicator is switched off).

After this period of time the red LED indicator is switched on in the following situations:

- If the appliance is overloaded with fresh food
- If the door is left open by mistake.

In these situations the red LED indicator will continue to be switched on until the appliance reaches the preset temperature.

If the red LED indicator is still switched on wait for 24 hours before calling GRAM service.

**Before operating****Final Check**

Before you start using the appliance check that:

1. The legs have been adjusted for perfect levelling.
  2. The interior is dry and the air can circulate freely at the back of the appliance.
  3. The interior is clean as recommended in the "Cleaning and care" section.
  4. The plug has been inserted into the wall socket and the electricity is switched on.
- Avoid unintentional disconnection by placing sticky tape on the switch.

**And note that:**

5. You will hear a noise as the compressor starts. The liquid and gases sealed within the refrigeration system may also make some noise, whether the compressor is running or not. This is quite normal.
6. The top of the cabinet may be slightly corrugated which is quite normal due to the manufacturing process used; it is not a defect.

7. We recommend setting the thermostat control midway and monitor the temperature to ensure that the appliance maintains the desired storage temperatures (see the "Temperature Control and Adjustment" section).

8. Do not load the appliance immediately after it is switched on. Wait until the correct storage temperature has been reached. We recommend checking the temperature with an accurate thermometer (see the "Temperature Control and Adjustment" section).

**Storing frozen food**

Your freezer is suitable for the long-term storage of commercially frozen food and also can be used for freezing and storing fresh food.

If there is an electrical cut, do not open the door. Frozen food should not be affected if the electrical cut lasts for less than 20 hrs. If the electrical cut lasts longer longer, then the food should be checked and either eaten immediately or cooked and then re-frozen.

**Freezing fresh food**

Please observe the following instructions to obtain the best results.

Do not freeze too large a quantity at any one time. The quality of the food is best preserved when it is frozen right through to the core as quickly as possible.

Do not exceed the freezing capacity of your appliance in 24 h.

Placing warm food in the freezer compartment causes the compressor to operate continuously until the food is frozen solid. This can temporarily lead to excessive cooling of the fridge compartment.

When freezing fresh food, keep the thermostat control at the medium position. Small quantities of food up to ½ kg (1 lb) can be frozen without adjusting the thermostat control.

**Making ice cubes**

Fill the ice cube tray 3/4 full with water and place it in the freezer. Loosen frozen trays with a spoon handle or a similar instrument; never use sharp-edged objects such as knives or forks.

## **Defrosting**

### **A) Fridge compartment**

The fridge compartment defrosts automatically. The thawed water runs to the drain tube via a collection container at the back of the appliance (**Fig. 6**).

During defrosting, water droplets may form at the back of the fridge compartment where a concealed evaporator is located. Some droplets may remain on the liner and refreeze when defrosting is completed. Do not use pointed or sharp-edged objects such as knives or forks to remove the droplets which have refrozen.

If, at any time, the defrost water is not drained from the collection channel, check that no food particles have blocked the drain tube. The drain tube can be cleaned with a cotton bud or similar instrument.

Check that the tube is permanently placed with its end in the collecting tray on the compressor to prevent the water spilling on the electric installation or on the floor (**Fig. 7**).

### **B) Freezer compartment**

Defrosting is very straightforward and without mess, thanks to a special defrost collection basin.

Defrost the freezer twice a year or when a frost layer of around 7 (1/4") mm has formed.

To start the defrosting procedure, switch off the appliance at the socket outlet and pull out the mains plug.

All food should be wrapped in several layers of newspaper and stored in a cool place (e.g. a fridge or a larder).

Containers of warm water may be placed carefully in the freezer to speed up the defrosting.

**Do not use pointed or sharp-edged objects, such as knives or forks to remove the frost.**

Never use hairdryers, electrical heaters or other such electrical appliances for defrosting. Sponge off the defrost water collected at the bottom of the freezer compartment. After defrosting, dry the interior thoroughly (**Fig. 8**). Insert the plug into the wall socket and switch on the electricity supply.

### **Replacing the interior light bulb (Fig. 11)**

In case that the light bulb is not working it is easy to replace. First make sure that the fridge/freezer is disconnected from the power supply by removing the plug. Take a flat screwdriver and keep it carefully without force into the left gap between the lamp cover and the internal cabinet. Then press the handle of the screwdriver carefully to the left until you notice that the left pin of the cover is disengaged. Repeat this procedure on the right gap, however now press the handle of the screwdriver carefully to the right. If both sides are loosened the cover can be removed easily.

Ensure that the bulb is screwed securely into the bulb holder. Plug the appliance into the power supply. If the light is still not working, replace the E14 screw-cap type 15 Watt (Max) bulb from your local electrical store and then fit it. Carefully dispose of the burnt-out light bulb immediately.

If you have changed the light bulb please fix the cover again in its former position. Take care that the cover is closed correctly.

### **How to reposition the doors**

Proceed in numerical order (**Fig. 12**).

## ***Cleaning and care***

1. We recommend that you switch off the appliance at the socket outlet and pull out the mains plug before cleaning.
2. Never use any sharp instruments or abrasive substances, soap, household cleaner, detergent or wax polish for cleaning.
3. Use luke warm water to clean the cabinet of the appliance and wipe it dry.
4. Use a damp cloth wrung out in a solution of one teaspoon of bicarbonate of soda to one pint of water to clean the interior and wipe it dry.
5. Make sure that no water enters the temperature control box.
6. If the appliance is not going to be used for a long period of time, switch it off, remove all the food, clean it and leave the door ajar.
7. We recommend that you polish the metal parts of the product (i.e. door exterior, cabinet sides) with a silicone wax (car polish) to protect the high quality paint finish.
8. Any dust that gathers on the condenser, which is located at the back of the appliance, should be removed once a year with a vacuum cleaner.
9. Check the door seals regularly to that they are clean and free from food particles.
10. Never:
  - Clean the appliance with unsuitable material such as petroleum based products.
  - Subject it to high temperatures in any way,
  - Scour, rub etc., with abrasive material.
11. To remove a door tray, remove all the contents and then simply push the door tray upwards from the base.
12. Make sure that the special plastic container at the back of the appliance which collects defrost water is clean at all times. If you want to remove the tray to clean it, follow the instructions below:
  - Switch off the socket and pull out the mains plug
  - To remove the water collector tray pull and turn (left-right).
  - Clean and wipe it dry
  - Reassemble the tray by reversing the sequence and operations
13. To remove a drawer, pull it as far as possible, tilt it upwards and then pull it out completely.

## ***Do's and Don'ts***

- Do** clean your appliance regularly (see the "Defrosting" section).
- Do** keep food for as short a time as possible and adhere to "Best Before" and "Use by" etc. dates.
- Do** defrost food in the fridge compartment.
- Don't** store bananas in your fridge compartment.
- Don't** cover the shelves with any protective materials which may obstruct air circulation.
- Don't** store poisonous or any dangerous substances in your appliance. It has been designed for the storage of edible foodstuffs only.
- Don't** leave the door open for long periods, as this will make the appliance more costly to run and cause excessive ice formation.
- Don't** use sharp edged objects such as knives or forks to remove the ice.
- Don't** exceed the maximum freezing loads when freezing fresh food.
- Don't** try to keep frozen food which has thawed; it should be eaten within 24 hours or cooked and refrozen.

### ***Energy Consumption***

Maximum frozen food storage volume is achieved without using the middle drawer and the upper shelf cover provided in the freezer compartment. Energy consumption of your appliance is based on the freezer compartment being fully loaded without using the middle drawer and upper shelf cover.

### **Practical advice concerning the reduction of the electricity consumption**

1. Make sure that the appliance is located in well-ventilated areas, far from any heat source (cooker, radiator, etc.). At the same time, the appliance should be kept away from sunlight.
2. Make sure that the purchased refrigerated/frozen food is placed in the appliance as soon as possible, especially during summertime. It is recommended to use thermal insulated bags to transport the food.
3. We advise you to place frozen food in a vessel in the refrigerator compartment when the food has to thaw. In this way you avoid that the water resulting from the thawing leaks into the refrigerator compartment. We recommend you to start the thawing at least 24 hours before the use of the frozen food.
4. Do not leave the door of the appliance open more than necessary and make sure to close it properly after use.

### ***Information concerning the noise and the vibrations which might appear during the operation of the appliance***

1. The operation noise can increase during the operation.
  - In order to keep the temperatures at the adjusted temperatures, the compressor of the appliance starts periodically. The noise produced by the compressor becomes stronger when it starts and a click can be heard when it stops.
  - The performance and operation features of the appliance can change according to the surrounding environment. They must be considered as normal.
2. Noises like liquids flowing or as being sprayed
  - These noises are caused by the flow of the refrigerant in the circuit of the appliance and comply with the operation principle of the appliance.
3. Other vibrations and noises.
  - The level of noise and vibrations can be caused by the type and the aspect of the floor on which the appliance is placed. Make sure that the floor does not have significant level distortions or if it can yield to the weight of the appliance (it is flexible).
  - Another source of noise and vibrations is represented by the objects placed on the appliance. These objects must be removed from the appliance
  - The bottles and the vessels placed in the refrigerator touching each other. In such cases move the bottles and the vessels so that there is a small distance between them.

## Troubleshooting

If the appliance does not operate when switched on then check:


- That the plug is inserted properly in the socket and that the power supply is on. (To check the power supply to the socket, plug in another appliance)
- Whether the fuse has blown, the circuit breaker has tripped or whether the main distribution switch has been turned off.

- That the temperature control has been set correctly.


- That the new plug is wired correctly, if you have changed the fitted, moulded plug.

If the appliance is still not operating at all after above checks, contact the GRAM service. Please ensure that above checks have been done, as a charge will be made if no fault is found.

## Technical data

Brand	<b>GRAM</b>
Model	<b>KF 3336-90</b>
Appliance type	<b>Refrigerator-freezer Type II</b> * 
Gross volume (litre)	321
Net volume (litre)	292
Freezer net volume (l.)	87
Refrigerator net volume	205
Freeze capacity (kg/24 h)	9
Energy class (1)	A+
Power consumption (kWh/year) (2)	293
Safety during electricity cut (hours)	20
Noise dB(A)	41
Environmentally friendly refrigerating agent R600a	
(1) Energy class : A++ .....D (A++ = economical . . . D = less economical)	
(2) The real power consumption depends on using conditions and appliance location.	



The symbol  on the product or on packaging indicates that this product must not be treated as household waste. Instead it has to be handed over to the place of collection point for the recycling of electrical and electronic equipment. By ensuring the correct removal of this product you help preventing the potential negative consequences for the environment and human health, which could be caused by the inappropriate waste handling of this product. For more detailed information about recycling of this product, please contact your local government offices, your household waste disposal service or the shop where you purchased the product.